

THE ROLE OF PROFESSIONAL MEMBERS IN PTI



Don Kline, Kline Engineering & Consulting

Topics

- History of Professional Membership in PTI
- PM-200 Professional Member Committee Advisory Group
- First Task – Develop a Web Based Format for Answering Technical Questions from PTI Members

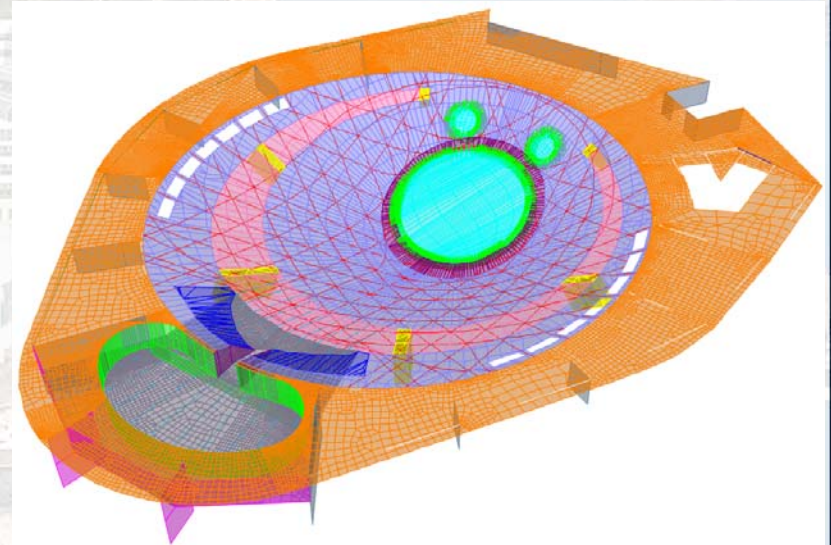
History of Professional Membership in PTI

- PTI organized in 1976
- First members were primarily PT companies
- PT buildings were designed by the PT suppliers
- Few design firms touched PT



History of Professional Membership in PTI

- First engineers began to use the load balancing method
- Then came computer software that streamlined design
- Today there are nearly 500 professional members
- Dues second only to PT Supplier Companies



Notable Professional Members

- Ken Bondy, Past PTI President
- Florian Barth, Past ACI President
- Jim Cagley, Past ACI 318 Chair
- Cary Kopczynski, TAB Chair
- Many of the PTI “Legends”

Professional Members

- Big influence on the industry
- They have helped to drive quality
 - Tony Chrest, Walker Parking
- They lend credibility to technical publications and journal
- They get value in return



PM-200 Professional Member Committee

- Don Kline, Chair
- Amy Dowell, Staff
- Miroslav Vejvoda, Staff
- Rashid Ahmed, Walker Parking
- Asit Baxi, Baxi Engineering
- Carol Hayek, CCL USA
- Jonathan Hirsch, Bentley Systems
- Cary Kopczynski, Cary Kopczynski & Co.
- Frank Malits, Cagley & Assoc.

PM-200 Mission

- Develop and maintain liaison with and provide technical support to PTI Professional Members

PM-200 Task

- First Task – Develop a Peer Group (PG) of professional members to answer technical questions posed through the PTI website
- The PG would consist of experts from the various peer group categories within PTI:
 - Buildings
 - Bridges including stay cables and grouting
 - Slab on ground
 - Rock and soil anchors
 - Repair, rehabilitation, and strengthening

Peer Group

- Develop a web based form for submitting technical questions to PTI
- Membership will be checked by requiring login into the PTI website
- Questions will be screened by staff and forwarded to the appropriate peer group category (e.g. slab on ground, repairs, etc.)

Peer Group

- Use online closed forum to answer question
- Responses expected from peer group within 3 days
- Responses will be compiled by staff
- Compiled answer will be sent by staff without identifying primary author of the answer

Web Form

Peer Group

As a service to the Post-Tensioning Institute Professional Member community, answers to detailed design questions may be posed to the PTI Professional Member Peer Group. By submitting a question to the Peer Group, you agree to the following:

- Answers to questions are not the collective opinion of PTI or any PTI committee.
- Answers have been provided in good faith. Different answers may be presented and it is up to you, the design professional, to discern the safest option for your specific condition.
- In most situations, an answer will be provided within 5 working days.

Members of the Professional Member Peer Group include:

Rashid Ahmed, Walker Parking

Don Kline, Kline Engineering & Consulting, LLC

Asit Baxi, Baxi Engineering, Inc.

Cary Kopczynski, Cary Kopczynski & Co, Inc., PS

Carol Hayek, CCL USA, Inc.

Frank Malits, Cagley & Associates

Jonathan Hirsch, Bentley Systems

Web Form

* Full Name

* E-mail Address

* Question

Ask a question of the Professional Member Peer Group (detailed design related question) ▼

* Category (Please check all that apply)

- Buildings
- Bridges
- Parking Structures
- Repair, Rehabilitation and Strengthening
- Rock and Soil Anchors
- Slab-on-Ground
- Materials
- Specifications
- General

* Question - Please be specific briefly state the question, project constraints, previous research done on the subject. You may upload a file with supporting information if necessary.

Supporting File Upload (if necessary)

No file selected.

.pdf, .jpg, .docx, .xlsx, .doc, .xls

* I accept the terms of the [disclaimer](#)

Yes

Disclaimer

Items to include in the disclaimer:

- Answers are provided in good faith. Engineering judgment is required by the licensed design professional
- Answers are not necessarily the opinion of PTI or the consensus of PTI committees
- ????

Next Steps

- Continue to recruit members willing to answer questions in each focus area
- Finalize the disclaimer draft
- Prepare formal proposal for TAB/Board of Directors

Professional Members

- Professional members have and continue to work with the member companies to advance the PT industry.
- PM-200 will provide a conduit for professional members to get involved.
- Finalizing a web based forum for answering technical questions.